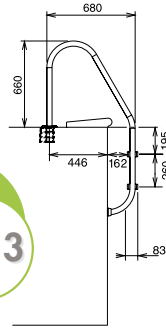


All our ladders are compliant with the standard NF P 90-302: August 2002

Ladder TRIANON



NEW in 2013



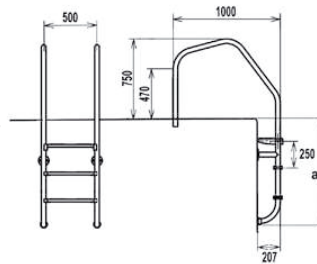
Ø 48 NOW AVAILABLE IN 2013

Technical features:

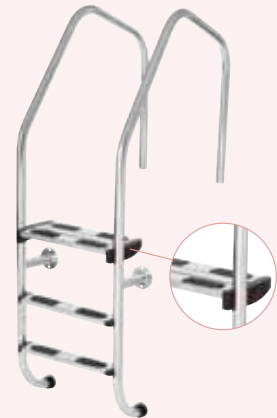
- Ø 48 mm non-slip or Ø 42 mm stainless steel tubes, nuts and bolts in A4 stainless steel
- The treads are fastened to the tubes through flow drilled holes on the tread-side, this method ensures an impeccably smooth finish with no sharp edges likely to cause injury
- Comes with 2 anchor sockets and 2 stainless steel escutcheon plates
- Available with 2, 3, 4 or 5 treads (with reinforced resin end pieces)
- Distance between the centre of the anchor socket and the edge of the pool = 446 mm

Technical features:

- Ø 43 mm 316-L stainless steel tubes,
- Flow drilling: The treads are fastened to the upright tubes through flow drilled holes on the tread-side, this method ensures an impeccably smooth finish with no sharp edges likely to cause injury
- Stainless steel treads (with reinforced resin end pieces),
- Type A4 nuts and bolts,
- Delivered in one piece,
- Safety step.



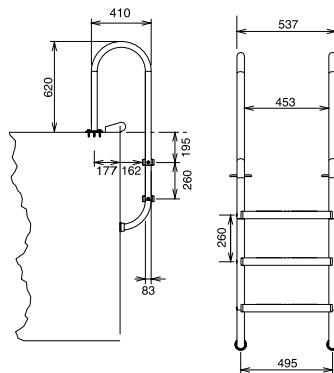
Ladder CHINON



Ladder CHAMBORD



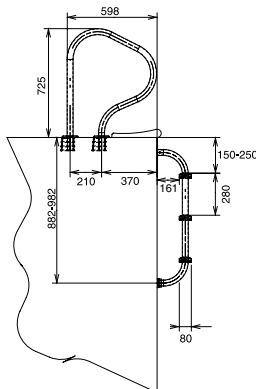
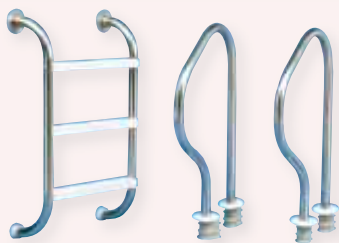
Plate socket version for wooden pools



Technical features:

- Ø 42 mm 304L stainless steel tubes, nuts and bolts in A4 stainless steel
- The treads are fastened to the tubes through flow drilled holes on the tread-side, this method ensures an impeccably smooth finish with no sharp edges likely to cause injury
- Comes with 2 anchor sockets and 2 stainless steel escutcheon plates
- Available with 2, 3, 4 or 5 treads (with reinforced resin end pieces)
- Distance between the centre of the anchor socket and the edge of the pool = 177 mm
- Available with an articulated hand rail to allow installation in wooden pools fitted with a Mambo cover

Ladder RAMBOUILLET



Technical features:

- Ø 42 mm 304L stainless steel tubes, nuts and bolts in A4 stainless steel
- The treads are fastened to the tubes through flow drilled holes on the tread-side, this method ensures an impeccably smooth finish with no sharp edges likely to cause injury
- The upper section is delivered with 4 anchor sockets and 4 stainless steel escutcheon plates
- The submerged section is delivered with 2 stainless steel plate sockets and 2 adhesive seals
- Available with 3 or 4 stainless steel treads (with reinforced resin end-pieces)

Hand rails

Ø 40 mm 304L stainless steel tubes

Choose from the following list:

- 1 - Hand rail mounting brackets
- 2 - Wall sealed mounting plate
- 3 - White PVC bumpers
- 4 - Internal unions



Ladder hinges

2 models are available:

Ø 40 mm or Ø 42 mm
304 L stainless steel tube

Specifically developed for
pools equipped with covers



Grab rails

Ø 42 mm 304L stainless steel tubes

Available with either anchor sockets or plate sockets

Grab rails are fastened to the deck

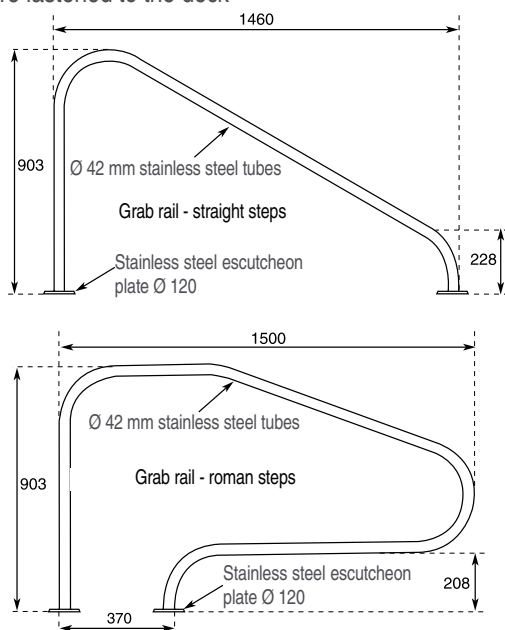


Plate sockets

Ø 42 mm 304L stainless steel tube



Dealer's stamp: