

# Octo 505

## Height 120 cm

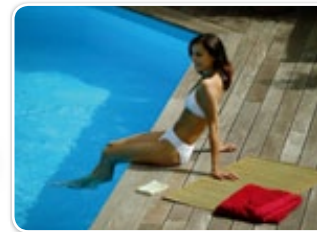
ref. 27112205

# Tropic



## A simple pool, for family fun!

Structure made of class IV treated pine, easy to install MTi filtration group, removable access steps, single width pine coping, dark blue liner 0.50 mm.



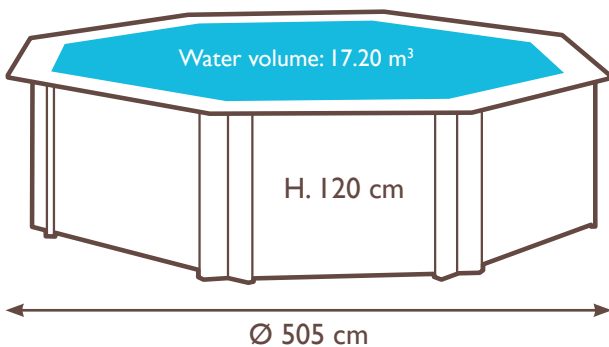
## Standard compliant equipment

Every Procopi pool complies with the standards in effect governing pool kits, including the new French standards that came into effect in February 2011:

- **NF P90-316** >> Private family pools - pool kits - general safety requirements and test methods.
- **NF P90-317** >> Private family pools - means of access - general safety requirements and test methods.

- **NF P90-318** >> Private family pools - filtration groups and/or filtration systems - general safety requirements and test methods.

Accreditation tests are carried out by an independent laboratory that is entitled to demand modifications to the equipment or installation instructions should it deem this to be necessary. Once all tests have been passed, the laboratory issues a certificate for each pool model tested.



Procopi is PEFC certified (chain of custody: FCBA/12-01382) for procurement of wood from sustainably managed forests according to the regulations set out by the Programme for the Endorsement of Forest Certification.

The PEFC label pertains to wood from European forests. Labelled CTB-B+ SP by the CTBA (The denomination SP was created for CTB-P+ and CTB-B+ certifications to indicate enhanced retention of organic copper type products).



Wooden structure  
Pool fittings



Filter



Liner  
Pump & ladder

27112205 Wooden pool Tropic Octo 505  
Single pine, Dark blue, Height: 120



Price



Made in France

## EXPRESS POOL

**PROCOPI**  
Pool & Spa Equipment

# Octo 505

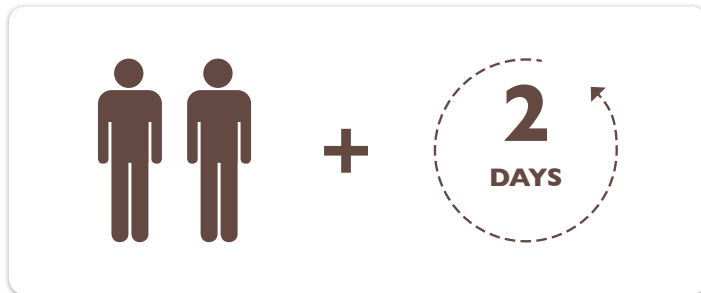
## Height 120 cm

ref. 27112205

# Tropic



## Assembly



Wooden structure  
Pool fittings



Filter



Liner  
Pump & ladder

● : included  
○ : non included

## EXPRESS POOL



Made in France

**TROPIC  
OCTO**

Model	Octo 505
Supplier reference	27112205
Outer dimensions (cm)	
Inner dimensions (cm)	
Height including coping (cm)	120
Water volume (m <sup>3</sup> )	17.20
Pool surface area (m <sup>2</sup> )	15.64
Metal support brace	○
Single width pine coping, thickness 28 mm, width 195 mm	●
Solid, Northern Pine, class IV treated, autoclaved slats, thickness in mm, tolerance + or - 1 mm	45
Liner thickness	0.50mm
Liner colour	Dark blue
Number of skimmers	1
Number of return fittings	1
38 mm hydraulic fittings not suitable for burying	●
Sand filter	MTi
Sand filter diameter (mm)	400
Flow rate at the return fitting (m <sup>3</sup> /h)	5.20
Quantity of sand provided (m <sup>3</sup> /h)	25
6-way valve (filtration/back wash/rinse/circulation/drain/ closed)	●
In-pool stainless steel ladder	3 treads
Wooden access ladder	4 treads
Underlay	●
Bubble cover	○
Electrical panel	○
Underwater spot light	○
Dechlorinator	○
Installation instructions	●
Guarantee on the structure	10 years
Guarantee on the liner	2 years
Guarantee on the filter	5 years
Guarantee on the pump and ladder	2 years